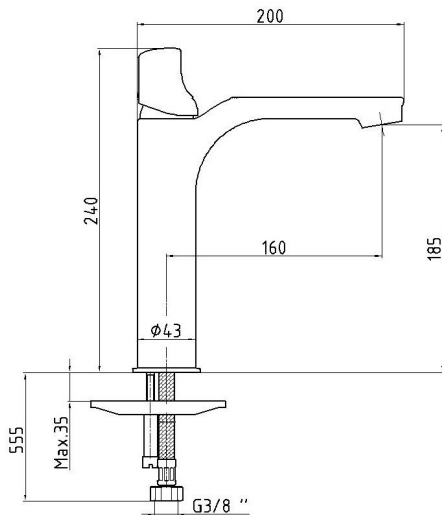


EMCO SINGLE LEVER BASIN MIXER M



Product Description

Product Number	54102010700100
Product Name	Basin Mixer L without Waste Set
Series	P_3000

Technical Specification

Aerator	Neoperl Caché
Cartridge Type	Ø35 mm Ceramic Cartridge
Min. Water Pressure	0,5 bar
Max. Water Pressure	10 bars
Recommended Water Pressure	3 bars
Nominal Flow Rate @3bars	5 l/m
Inlet Water Temperature	5°C - 65°C
Supply Connection	600 mm G 3/8" Flexible Connection Hoses
Finishing	Chrome with Hygiene Plating
Body Material	Brass

January 2021

We reserve the right to alter product specification and colors and to make technical modifications without prior notice.

Emco Novus Middle East Trading LLC, PO Box 211008, Dubai U.A.E